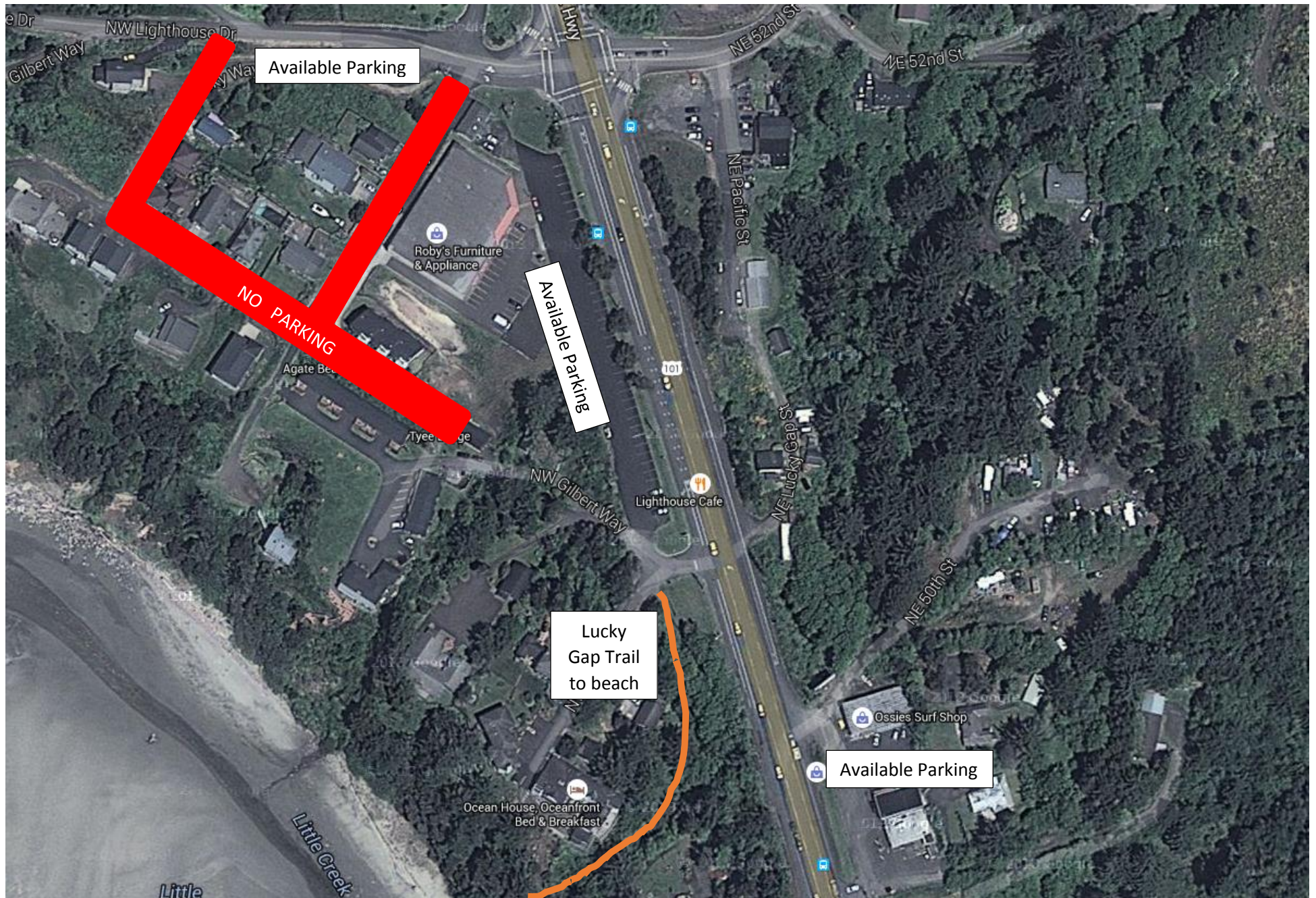


# Agate Beach Surf Classic Parking Options



# Agate Beach Surf Classic Parking Options

1. Main contest parking lot will be on the corner of U.S. 101 and NW Lighthouse Drive. It's located on the west side of U.S. 101.
  2. Overflow parking can be found in the parking lot of Ossies Surf Shop and the gravel lot off of NW Lighthouse Drive.
    - a. Ossies Surf Shop is located on the east side of U.S. 101.
    - b. Gravel lot is located on NW Lighthouse Drive west of U.S. 101.
  3. There will be No Parking allowed on NW Agate Way, NW Gilbert Way, and NW Rocky Way.
- *Please use the Lucky Gap Trail to access the beach and contest area. Please do use any goat trails that cut through neighborhoods.*
  - *Please be mindful of the neighborhoods and businesses around the parking and trail area.*
  - *Please be mindful to leave no trash behind utilize the garbage receptacles.*